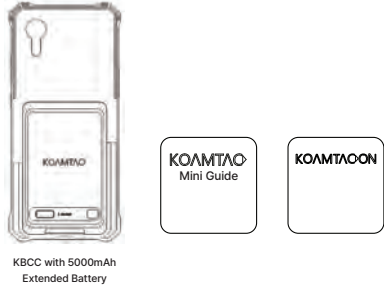


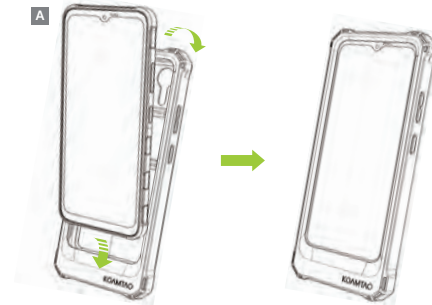
What's in the Box?

- 1 x KBCC with 5000mAh Extended Battery
- 1 x KOAMTACON Guide
- 1 x KBCC Mini Guide



Device Installation (Charging Case)

1. Bend the top of the KBCC Charging Case back and slide phone bottom first into the case toward the connector. (A)



Additional KBCC Accessories:

- 1-Slot Charging Cradle
- 2-Slot Charging Cradle
- 10-Slot Charging Cradle

Visit our website for more information



100 Village Blvd Ste 300 Princeton, NJ 08540
+1 609-256-4700 p | +1 609-228-4373 f
info@koamtac.com | www.koamtac.com

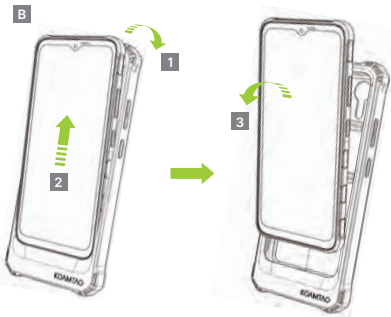


Protective
Charging Case
with Extended Battery
(KBCC) Mini Guide



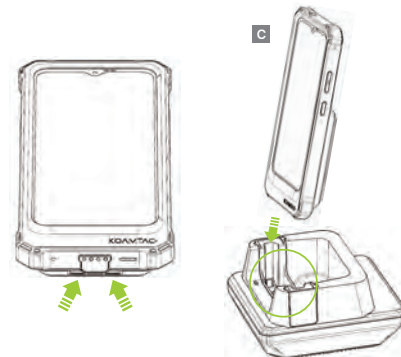
Removing Phone (Charging Case)

Remove the phone from the KBCC by peeling off the top edge of the KBCC, slide the phone up, and pull it out. (B)



Using a Charging Cradle

Place the KBCC into the cradle aligning the pogo pins of the KBCC and cradle. (C)



Using a USB-C Charging Adaptor

Plug the USB-C cable from charging adaptor into the USB-C port on the back of the KBCC.



Charging Status LED

When the device is charging

- Green: Fully Charged
- Orange: Charging
- Red: Low Battery

When the battery is in use
and device is discharging

- Blinking Green: Fully Charged
- Blinking Orange: Discharging
- Blinking Red: Low Battery

