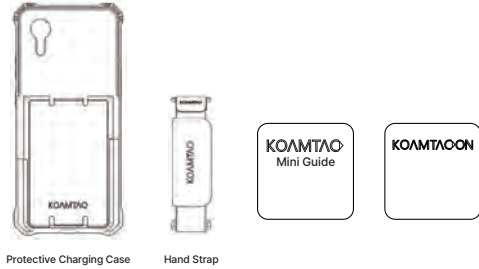


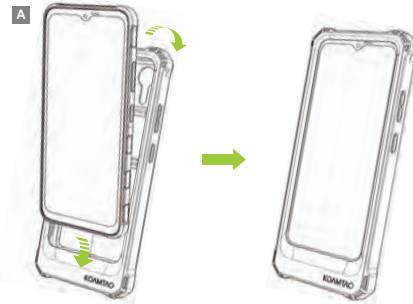
What's in the Box?

- 1 x Protective Charging Case (KPCC)
- 1 x KPCC Hand Strap
- 1 x KOAMTACON Guide
- 1 x KPCC Mini Guide



Device Installation (Charging Case)

1. Bend the top of the KPCC Charging Case back and slide phone bottom first into the case toward the connector. (A)



Additional KPCC Accessories:

- 1-Slot Charging Cradle
- 2-Slot Charging Cradle
- 10-Slot Charging Cradle

Visit our website for more information



100 Village Blvd Ste 300 Princeton, NJ 08540
+1 609-256-4700 p | +1 609-228-4373 f
info@koamtac.com | www.koamtac.com

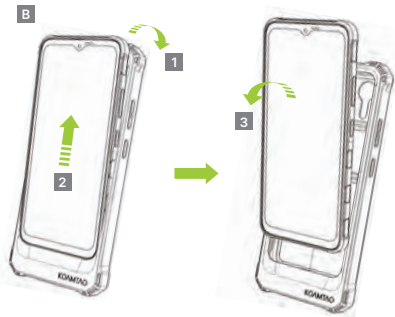


Protective Charging Case (KPCC) Mini Guide



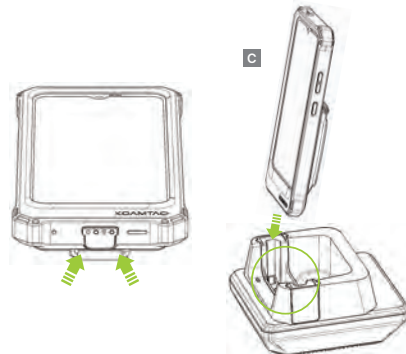
Removing Phone (Charging Case)

Remove the phone from the KPCC by peeling off the top edge of the KPCC, slide the phone up, and pull it out. (B)



Using a Charging Cradle

Place the KPCC into the cradle aligning the pogo pins of the KPCC and cradle. (C)



Using a USB-C Charging Adaptor

Plug the USB-C cable from charging adaptor into the USB-C port on the back of the charging cradle.



Hand Strap Installation

1. Place the KPCC phone side down. Place the metal ring of the Hand Strap into the groove on the bottom of the KPCC until it clicks. Attach the top metal ring of the Hand Strap into the upper groove of the KPCC until it clicks.

