



KOAMTAC Fundamentals

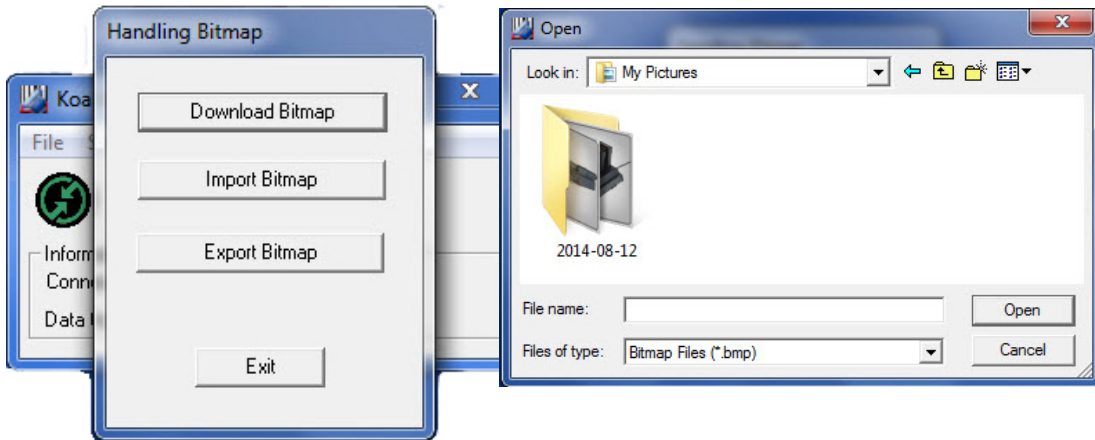
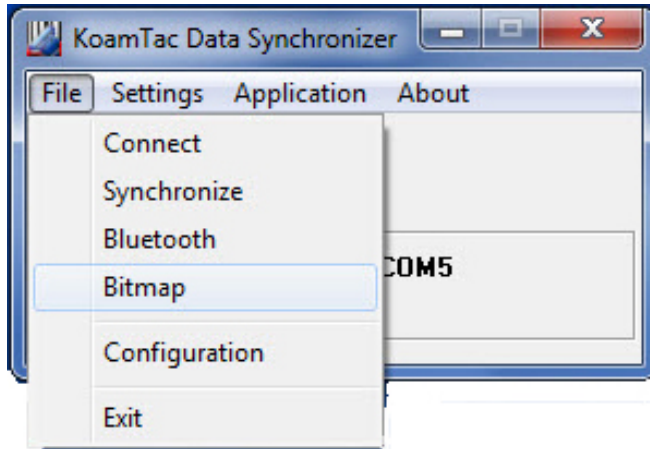
Displaying Bitmap Images for KDC

KOAMTAC Fundamentals

Setup for Display Bitmap

You must first download the KTSync application from koamtac.com, under Support>Downloads>Applications. After properly installing KTSync, connect the KDC through USB and open Bitmap.

Download Bitmap & upload up to 50 bitmap images. The KDC may display 128 x 48 black and white images and is supported with firmware versions 3.05 and above.



KTSync will only accept bitmap files using the following format Bxxx.bmp **xxx will specify bitmap index in the KDC memory and may be set from 000 to 049.