

KOAMTAC

KDC100
Quick Guide



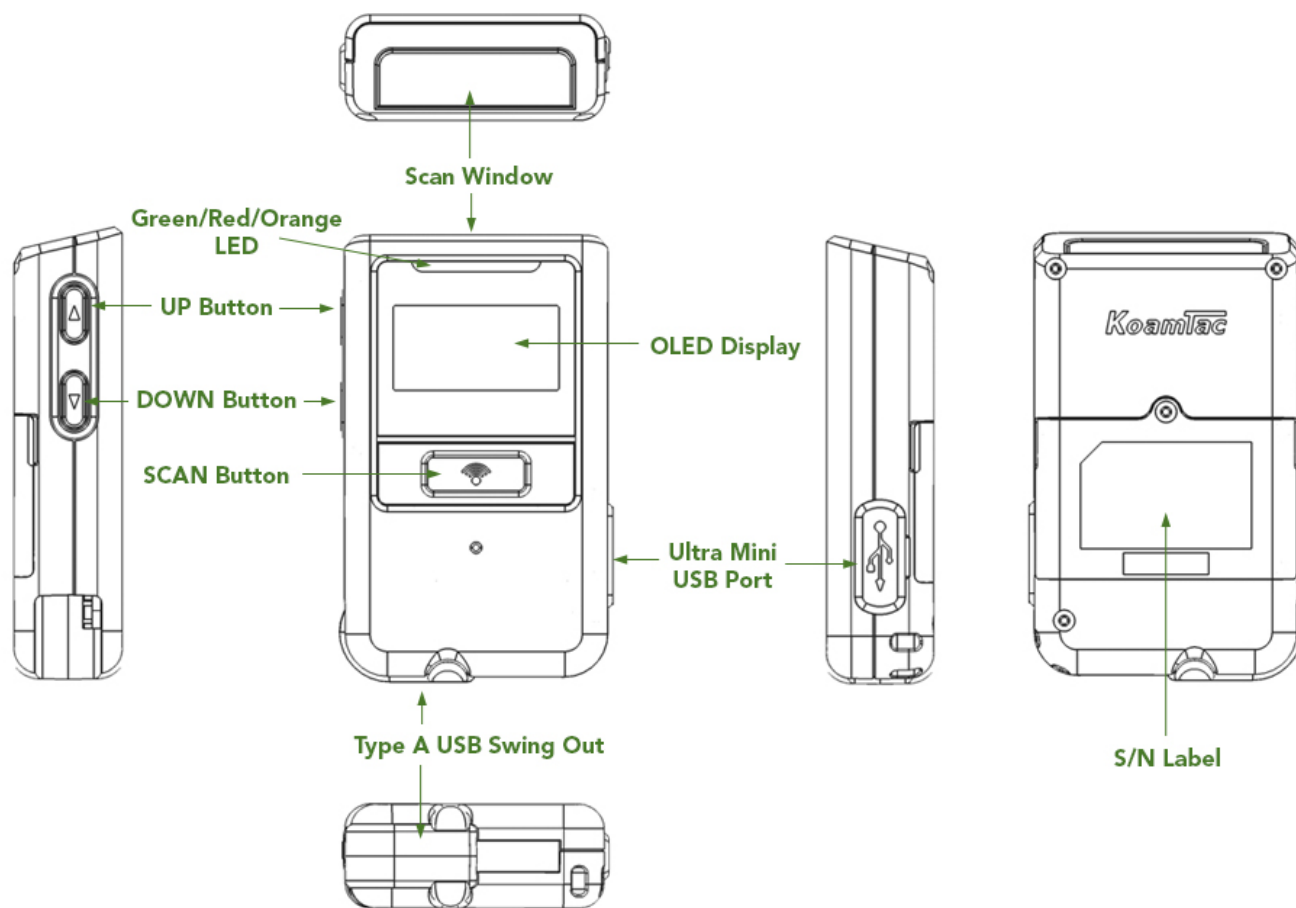
Contents

1. Product Introduction.....	2
1.1 KDC100 Diagram.....	2
2. Usage.....	2
2.1 Using Keyboard Wedge (HID Keyboard).....	2
2.2 Using KTSync – Windows PC.....	3
3. Product Specifications.....	5

1. Product Introduction

The KDC100 USB barcode scanner is an ultra-lightweight and compact 1D laser data collector.

1.1 KDC100 Diagram



2. Usage

2.1 Using Keyboard Wedge (HID Keyboard)

To use the KDC100 as a USB HID keyboard, change the USB mode.

- a) Navigate through the KDC Menu to USB Config
- b) Select USB Mode
- c) Select USB HID
- d) Save & Exit.

Changing the "USB Mode" option will erase all data in KDC memory, so make sure to back up your data before changing this option.

KTSync may not recognize the KDC if the KDC is in "USB HID" mode.

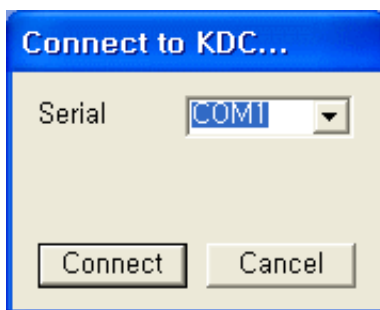
See Reference Manual for more detailed information.

Visit store.koamtac.com to purchase additional products and accessories.

2.2 Using KTSync – Windows PC

The KDC automatically connects to a COM port when connected to a PC's USB port once KDC Windows USB driver is installed on the Windows PC. The COM port assignment can be found in Windows Device Manager.

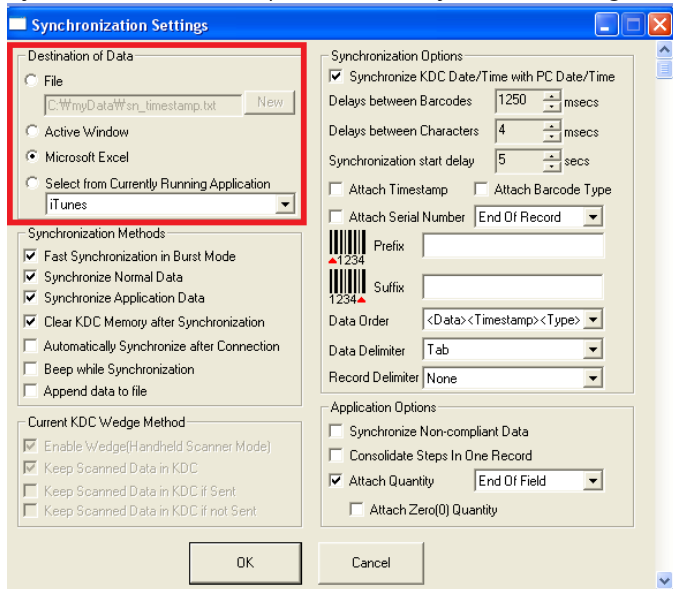
It is also possible to manually assign the KDC COM port by using the KTSync Connection submenu under the "File" menu.



If KTSync fails to connect automatically to the KDC, please follow these steps:

- a) Exit KTSync.
- b) Check to make sure that you have connected the KDC to a USB port on your PC.
- c) Make sure that you are using the cable provided with the KDC.
- d) Make sure that a COM port is assigned to a KDC in the Windows Device Manager.
- e) Restart KTSync.

From Synchronization Settings, you can set the destination of data. KTSync provides several synchronization options for synchronizing data from your KDC to Windows PC.



When barcode data is uploaded to the Windows PC, you must assign a destination for the data. Destination of Data options include:

(This option is applied only to Windows XP/Vista/7/8/10)

- File - This option means data will be saved in the assigned filename. You may select a different target directory by clicking the New icon. The default directory is C:\myData\sn_timestamp.txt. If C:\myData is not exist, you will be prompted to create it before data may be uploaded to a file.
- Active Window - This option means scanned barcode data is sent directly to the active program running on your Windows PC as if the data is being entered directly from a keyboard.
- Microsoft Excel - This option means barcode data is being imported directly into Microsoft's Excel. Various parameters may be set when uploading data to Excel.
- Select from Current Running Application – This option enables the user to select a currently running application for data synchronization.

Note:

- Data synchronization begins immediately if "Automatically Synchronize after Connection" is selected. If not selected, data synchronization is started manually by the user.
- Users SHOULD NOT operate the PC during the synchronization process. It may interrupt the process causing unreliable results.

For more detail, refer to the [Reference Manual](#), chapter 6 (Synchronization).

See Reference Manual for more detailed information.

Visit store.koamtac.com to purchase additional products and accessories.

3. Product Specifications

Physical	Design	Ultra-Compact Bluetooth Barcode Scanner
	Size	1.37" x 2.44" x 0.59" (35 mm x 62 mm x 15 mm)
	Weight	1.34 oz (38 g)
Functionality	Supporting OS	Mac OS X / Windows
	Keys	Scan Key, Up Key, Down Key
	Buzzer	Yes
	LED Indicator	1 Tri-color LED (Red / Amber / Green)
	USB Port	1 Swing-out USB Connector 1 Ultra-mini USB Connector
Memory	RAM	SDRAM 64KB
	ROM	Internal Flash ROM 256KB External Flash ROM 8MB
	Barcode Storage	409,600 Barcodes (EAN-13)
Power	Battery (Standard)	200 mAh Lithium-polymer
	Charging Solution	Swing-out USB Connector Ultra-mini USB Connector
	Charging Time	2 Hours
Communication	Bluetooth	No
	USB	USB to Serial (Swing-out USB Type A Connector/ Ultra-mini USB Connector)
Barcode Reader	1D Laser	Yes
	# of scans per charge (1 sec interval)	>12,000
	# of scans per charge (10 sec interval)	>9,000
	Scan Range (10mil Code39)	Laser: 1.97" to 7.48" (50 to 190 mm)
	Screen Reading	No
	Postal Codes/OCR Passport	No
Environment	Drop Spec	4 ft (1.22 m) with protective boot
	IP Rating	IP42
	Operating Temp.	32°F to 113°F (0°C to 45°C)
	Storage Temp.	-4 °F to 113 °F (-20 °C to 45 °C)
	Humidity Spec	5% ~ 85% (non-condensing)
Regulatory Conformance	Laser Safety	IEC60825/CDRH Class II
	LED Safety	N/A
	Regulatory	CE, FCC, KC, RoHS Compliant
Accessories	7-slot Charging Cradle	Yes
	Protective Boot	Yes

See Reference Manual for more detailed information.

Visit store.koamtac.com to purchase additional products and accessories.