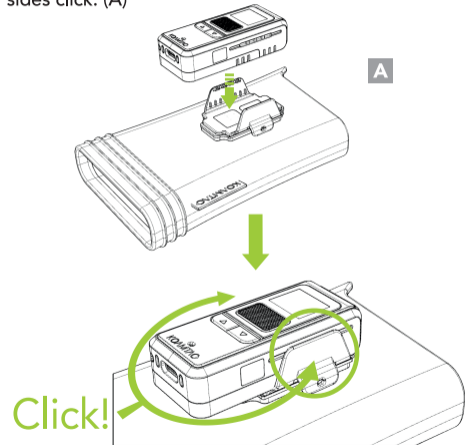
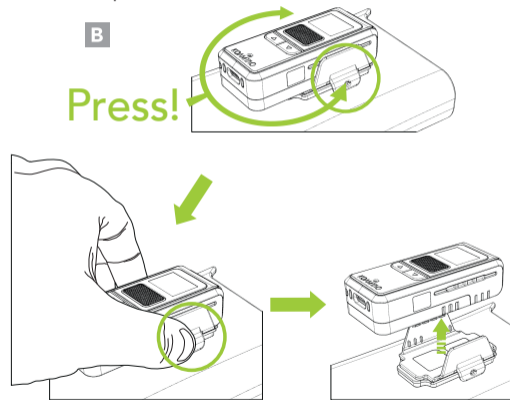


Assembly Instructions

1. Insert the KDC185 into the Safety Glove cap until both sides click. (A)



2. To remove the KDC185 from the Safety Glove, pull up while pressing the buttons on both sides of the Safety Glove cap. (B)



20211123 933495

Additional Accessories

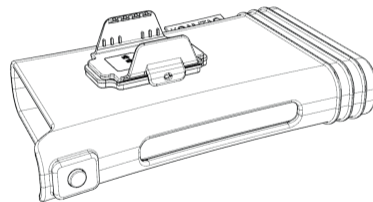
- ▶ KDC185 Ring Trigger
- ▶ KDC185 2-Slot and 10-Slot Charging Cradle
- ▶ Protective Rubber Boot
- ▶ USB Type-C cable



116 Village Blvd, Ste 305, Princeton, NJ 08540
+1 609-256-4700 [p](#) | +1 609-228-4373 [f](#)
info@koamtac.com | www.koamtac.com



KDC185 Safety Glove Manual



* All pictures shown are for illustration purposes only.
Actual product may vary.