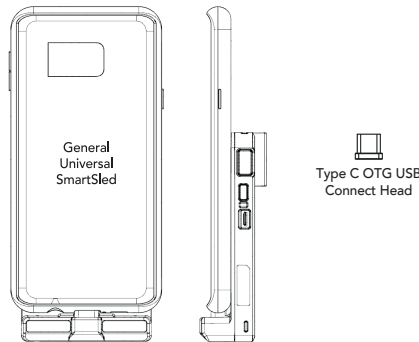


## What's in the box?

- ▶ 1 x General Universal SmartSled
- ▶ 1 x Magnetic OTG USB Connect Head (Type C)



## Additional Accessories

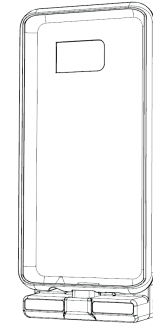
- ▶ 1-Slot Charging Cradle
- ▶ 4-Slot Charging Cradle
- ▶ HF Companion
- ▶ 0.5W UHF Companion
- ▶ 1.0W UHF Companion
- ▶ Pistol Grip
- ▶ Extended Battery



116 Village Blvd, Ste 305, Princeton, NJ 08540  
 +1 609-256-4700 p | +1 609-228-4373 f  
 info@koamtac.com | www.koamtac.com

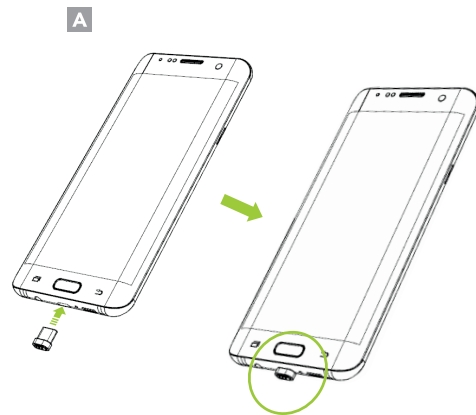


## General Universal SmartSled Assembly Manual

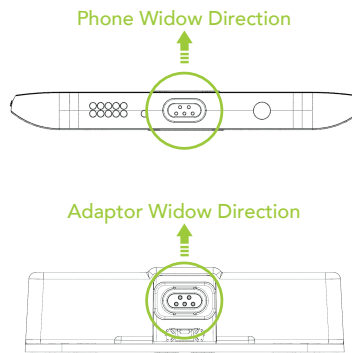


## Assembly Instructions:

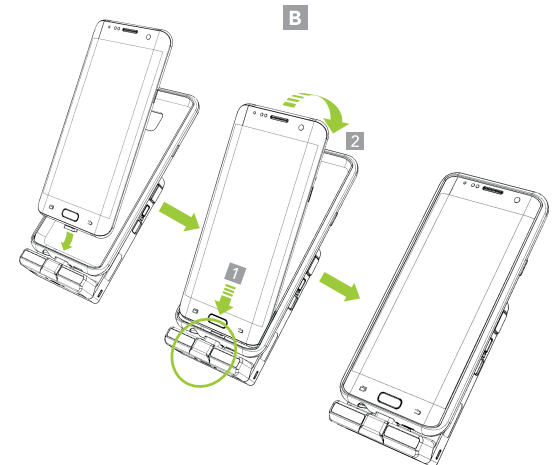
1. Attach the OTG USB Connect Head to the phone. (A)



2. Check the pin arrangement as shown in the image below because the OTG USB Connect Head is direction-sensitive.



3. Slide the phone into the General Universal SmartSled. (B)

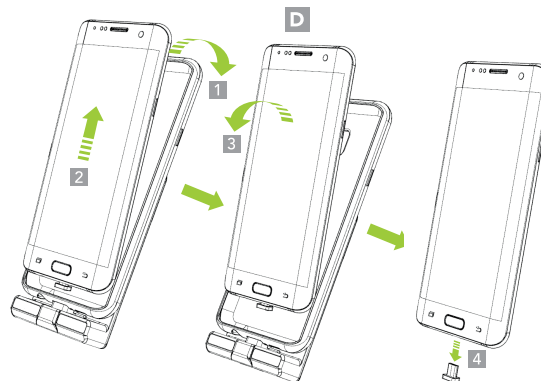


4. Inspect the connection between the General Universal SmartSled and previously installed OTG USB Connect Head. To test the connection, attempt to charge your device via USB or Charging Cradle - the device will begin charging if the connection is successful. (C)



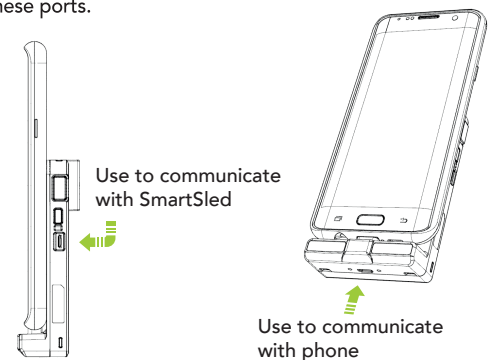
## Removing Phone

Remove the phone from the case by peeling off the top edge of the General Universal SmartSled. Carefully slide the phone up and pull the phone upward. Remove the OTG USB Connect Head from the bottom of the phone. (D)



## USB Port Usage

There is one Micro USB port on the side of the KDC and one Micro USB port on the bottom of the General Universal SmartSled. Data communication is specific for these ports.



\*Both USB ports support KDC and phone simultaneous charging.