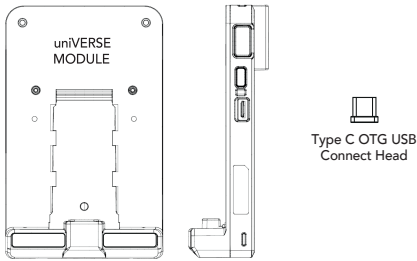


What's in the box?

- ▶ 1 x SmartSled uniVERSE MODULE
- ▶ 1 x Magnetic OTG USB Connect Head (Type C)



Additional Accessories

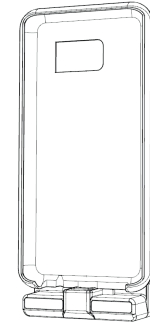
- ▶ 1-Slot Charging Cradle
- ▶ 4-Slot Charging Cradle
- ▶ HF Companion
- ▶ 0.5W UHF Companion
- ▶ 1.0W UHF Companion
- ▶ Pistol Grip
- ▶ Extended Battery



116 Village Blvd, Ste 305, Princeton, NJ 08540
+1 609-256-4700 p | +1 609-228-4373 f
info@koamtac.com | www.koamtac.com

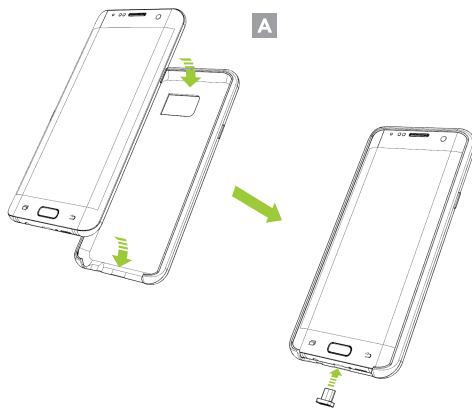


OtterBox uniVERSE Case Adaptor Assembly Manual

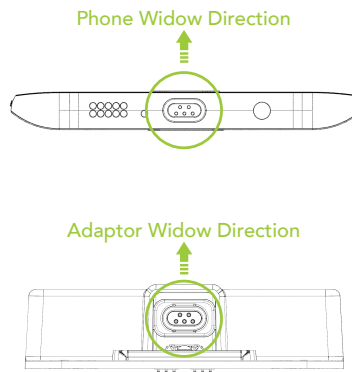


Assembly Instructions:

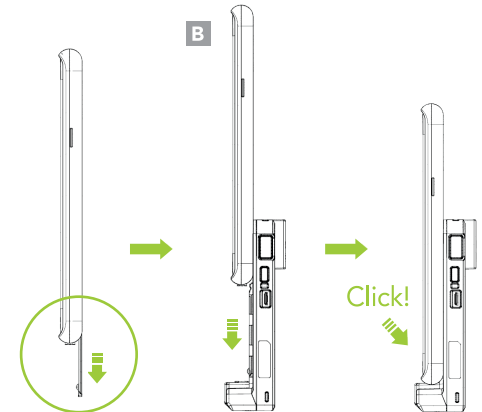
1. Install your phone in the uniVERSE case and install the appropriate OTG USB Connect Head for your phone. (A)



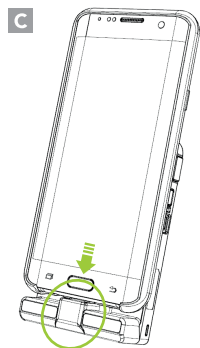
2. Check the pin arrangement as shown in the image below because the OTG USB Connect Head is direction-sensitive.



3. Remove the Removable Accent Plate from the back of the uniVERSE Case. Align the case with the uniVERSE Case Adaptor and slide down until you hear a click indicating it is in place. (B)

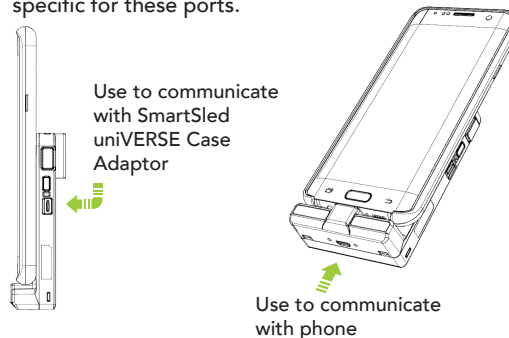


4. Inspect the connection between the uniVERSE Case Adaptor and previously installed OTG USB Connect Head. To test the connection, attempt to charge your device via USB or Charging Cradle - the device will begin charging if the connection is successful. (C)



USB Port Usage

There is one Micro USB port on the side of the SmartSled and one Micro USB port on the bottom of the uniVERSE Case Adaptor. Data communication is specific for these ports.



*Both USB ports support simultaneous charging of SmartSled and phone

Disclaimer

Otter Products, LLC, and its related persons and entities, is not responsible for the operation of this product or its compliance with safety and regulatory standards. This product has been designed for use with certain OtterBox branded products and has been certified by the manufacturer to meet OtterBox performance standards.

Warranty Statement

IN NO EVENT WILL THE MANUFACTURER, DISTRIBUTOR OR OTTER PRODUCTS, LLC BE LIABLE FOR ANY INCIDENTAL, DIRECT, INDIRECT, SPECIAL, PUNITIVE OR CONSEQUENTIAL DAMAGES (SUCH AS, BUT NOT LIMITED TO, DAMAGES FOR LOSS OF PROFITS, BUSINESS, SAVINGS, DATA OR RECORDS) RELATED TO THIS PRODUCT. EXCEPT AS STATED HEREIN, NO OTHER WARRANTIES WILL APPLY.

KOAMTAC KDC470/475 OtterBox uniVERSE Case Adaptor
Built for OtterBox uniVERSE
Explore at Business.OtterProducts.com