

KOAMTAC

KDC WiFi Roaming Specification

Rev 1.0
October 2016

Table of Contents

1. Introduction	Error! Bookmark not defined.
2. How to do WiFi Roaming	5
3. How to enable Roaming and set Threshold.....	6
3.1 Menu	6
3.2 Special barcodes	6
3.3 Commands	9
4. Contact Information.....	10

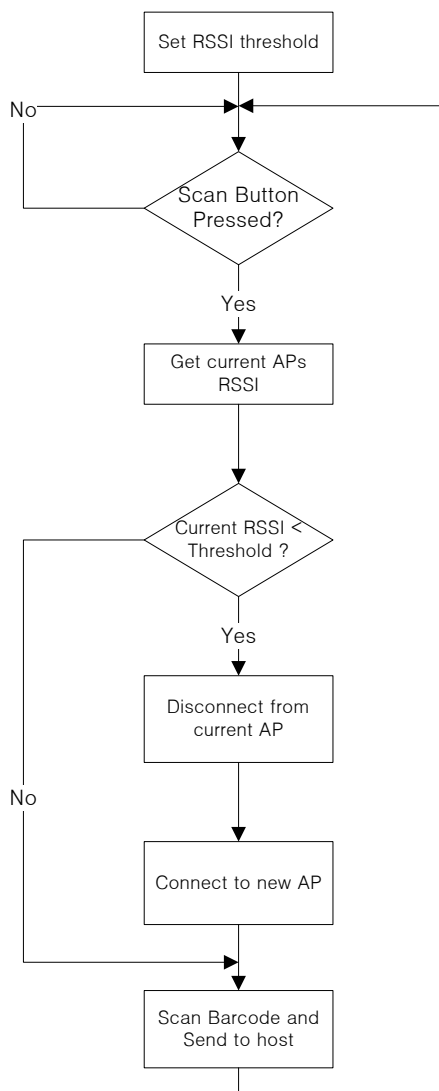
1. How to do WiFi Roaming

KDC does support roaming between APs which has the same SSID.

When user presses Scan button, KDC checks current APs signal strength. If the signal strength is lower than pre-defined threshold, KDC disconnects from current connected AP and connect to new AP which has strongest signal strength. Usually it takes about 3-4 seconds.

KDC provides a way to set the signal strength(RSSI) threshold and user can set it from -30 to -90.

The overall work flow is as following.



2. How to enable Roaming and set Threshold

KDC provides a way to enable/disable roaming and set signal strength threshold for Roaming with special barcodes, menu and commands.

2.1 Menu

- WiFi Config → Roaming → Enabled/Disabled/Threshold

2.2 Special barcodes

- KDC350LF (1D)

Roaming Enabled



RSSI Threshold = -30



RSSI Threshold = -40



RSSI Threshold = -50



Roaming Disabled



RSSI Threshold = -35



RSSI Threshold = -45



RSSI Threshold = -55



KDC350 WiFi F/W Specification

RSSI Threshold = -60



Sr03C

RSSI Threshold = -65



Sr041

RSSI Threshold = -70



Sr046

RSSI Threshold = -75



Sr04B

RSSI Threshold = -80



Sr050

RSSI Threshold = -85



Sr055

RSSI Threshold = -90



Sr05A

- KDC350CF (2D)

Roaming Enabled



┌MKDCSW001.

Roaming Disabled



┌MKDCSW010.

RSSI Threshold = -30



┌MKDCSr01E.

RSSI Threshold = -35



┌MKDCSr023.



RSSI Threshold = -40



┆MKDCSr028.

RSSI Threshold = -45



┆MKDCSr02D.

RSSI Threshold = -50



┆MKDCSr032.

RSSI Threshold = -55



┆MKDCSr037.

RSSI Threshold = -60



┆MKDCSr03C.

RSSI Threshold = -65



┆MKDCSr041.

RSSI Threshold = -70



┆MKDCSr046.

RSSI Threshold = -75



┆MKDCSr04B.

RSSI Threshold = -80



┆MKDCSr050.

RSSI Threshold = -85

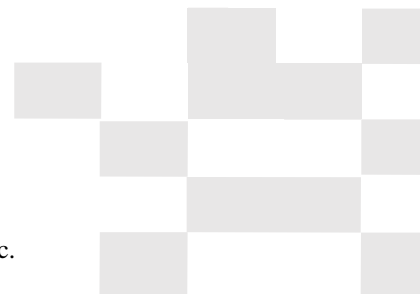


┆MKDCSr055.

RSSI Threshold = -90



┆MKDCSr05A.



2.3 Commands

GwWS	0	@	WiFi Roaming is disabled. 0 means '0'(0x30)
	1	@	WiFi Roaming is enabled. 1 means '1'(0x31)
GwWG	None	<u>value@</u>	Return status of WiFi Roaming 0(0x00): WiFi Roaming is disabled 1(0x01): WiFi Roaming is enabled
Gwr	S<value>#	<u>@</u>	RSSI Threshold(30 - 90)
Gwr	G	<u><value></u> <u>@</u>	Returns RSSI threshold



3. Contact Information



CORPORATE HEADQUARTERS

116 Village Blvd., Suite 305

Princeton, NJ 08540, USA

Phone: 609-256-4700, FAX: 609-228-4373

Email: support@koamtac.com

For more information, visit our website - www.koamtac.com

