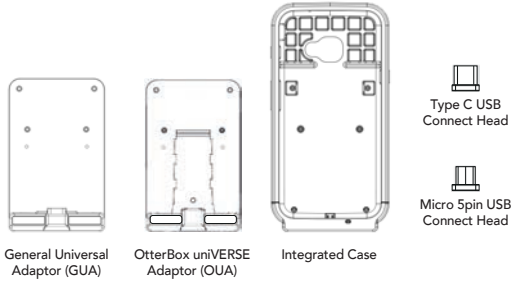


What's in the Box?

- 1 x General Universal Adaptor (GUA) with Case or
- 1 x OtterBox uniVERSE Adaptor (OUA) with Case or
- 1 x Integrated Charging Case
- 1 x Magnetic USB Connect Head (Type C or Micro USB) for GUA and OUA



Additional KPCC Accessories:

- 1-Slot Charging Cradle
- 4-Slot Charging Cradle
- Spare External Battery

Visit our website for more information.

KOAMTAC

116 Village Blvd, Ste 305, Princeton, NJ 08540
+1 609-256-4700 p | +1 609-228-4373 f
info@koamtac.com | www.koamtac.com

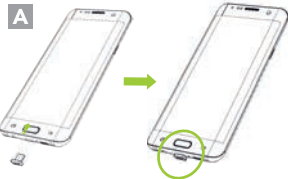
KOAMTAC

Protective Charging Case (KPCC) Mini Guide

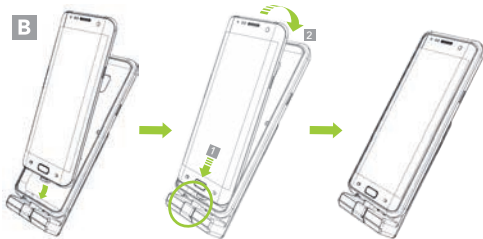


Device Installation (GUA)

1. Attach the correct USB connect head to the phone. (A)

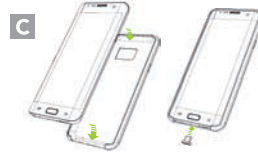


2. Slide the phone into the General Universal SmartSled. (B)



Device Installation (OUA)

1. Install your phone in the uniVERSE case and install the appropriate USB Connect Head for your phone. (C)

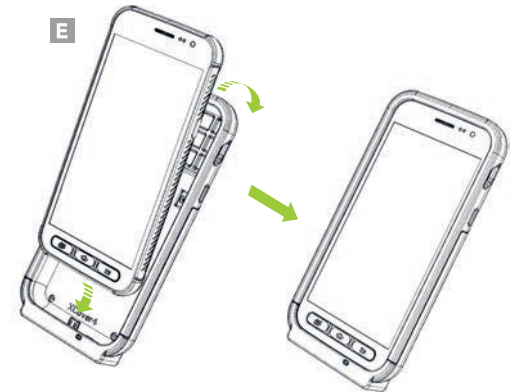


2. Remove the Removable Accent Plate from the back of the uniVERSE Case. Align the case with the KPCC Adaptor and slide down until you hear a click. (D)



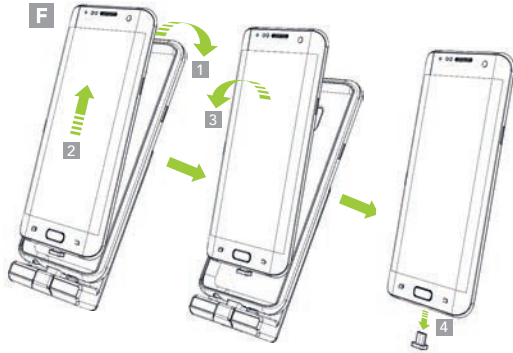
Device Installation (Charging Case)

1. Bend top of SmartSled Charging Case back and Slide device in to case toward connector. (E)



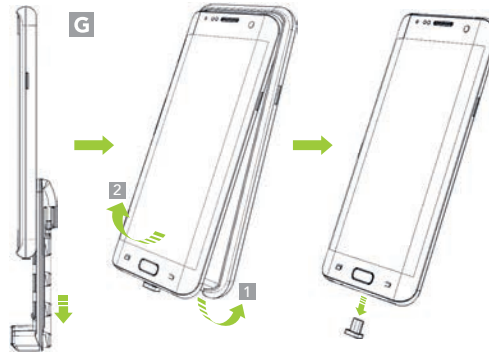
Removing Phone (GUA)

Remove the phone from the case by peeling off the top edge of the General Universal Smartsled. Carefully slide the phone up and pull the phone toward you. Remove the USB Connect Head from the bottom of the phone. (F)



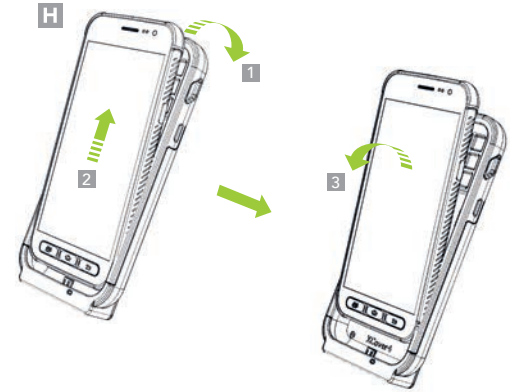
Removing Phone (OUA)

Slide down and remove KPCC Adaptor from the uniVERSE Case. Remove the phone from uniVERSE Case by peeling off the bottom edge of the uniVERSE Case. Remove the USB Connect Head from the phone. (G)



Removing Phone (Charging Case)

2. Remove the phone from KPCC SmartSled Case by peeling off the top edge of the SmartSled Case slide the phone up and pull it out. (H)



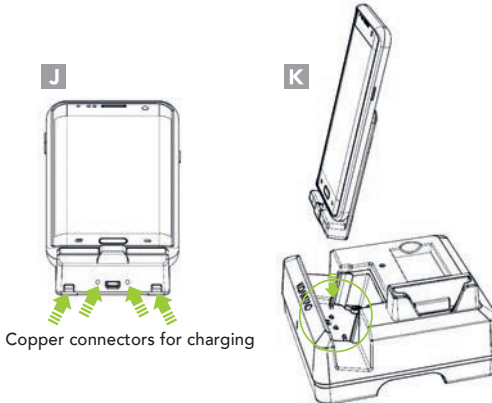
Checking Connection (GUA and OUA)

To test the connection between the GUA/OUA and the installed USB Connect Head, attempt to charge your device via USB or Charging Cradle. A successful connection will indicate charging on your device. (I)



Using a Charging Cradle

Place the charging terminals and holes on the bottom of the KPCC (J) on the cradle in accordance with the pogo pin and projection shapes of the charging cradle. (K)



Disclaimer

Otter Products, LLC, and its related persons and entities, is not responsible for the operation of this product or its compliance with safety and regulatory standards. This product has been designed for use with certain OtterBox branded products and has been certified by the manufacturer to meet OtterBox performance standards.

Warranty Statement

IN NO EVENT WILL THE MANUFACTURER, DISTRIBUTOR OR OTTER PRODUCTS, LLC BE LIABLE FOR ANY INCIDENTAL, DIRECT, INDIRECT, SPECIAL, PUNITIVE OR CONSEQUENTIAL DAMAGES (SUCH AS, BUT NOT LIMITED TO, DAMAGES FOR LOSS OF PROFITS, BUSINESS, SAVINGS, DATA OR RECORDS) RELATED TO THIS PRODUCT. EXCEPT AS STATED HEREIN, NO OTHER WARRANTIES WILL APPLY.

KOAMTAC KDC470/475 OtterBox uniVERSE Case Adaptor
Built for OtterBox uniVERSE
Explore at [Business.OtterProducts.com](https://www.Business.OtterProducts.com)