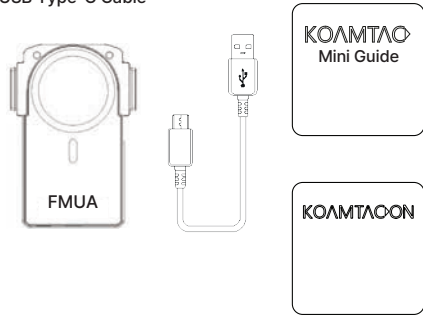


## What's in the Box?

- KDC1200 Series SmartSled
- Mini Guide
- + Flat MUA
- KOAMTACON Guide
- USB Type-C Cable

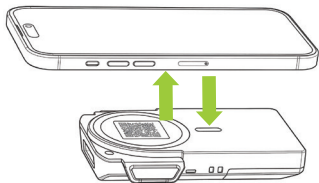


\* KDC1200 units will come pre-installed with the FMUA and include pre-assembled Companions if purchased.

## Attaching & Removing the FMUA

The FMUA uses a built-in magnetic mount to securely attach the SmartSled to your smartphone. Your phone must have built-in magnetic alignment or use a compatible magnetic case.

1. Hold your phone face-up and parallel to the FMUA, then slowly lower it toward the surface.
2. The magnets will guide the device into alignment. It will snap firmly into place without force.
3. To Remove, grip the phone firmly on both sides and pull directly away from the FMUA with steady, even pressure. Do not twist or pry.



## Powering the KDC1200 On/Off

Press and hold both left and right SCAN buttons for 3 seconds. The KDC1200 will beep when turned ON or OFF.

The KDC1200 will sound a long beep when it is ready to use.



## Bluetooth Pairing via Device QR Code

Ensure your smartphone has a compatible browser installed and set as the default:

Android: Chrome | iOS: Bluefy Web BLE browser

Allow all Bluetooth and browser permissions when prompted.

1. Open your phone's camera app and scan the QR code on the MUA.
2. Tap the link that appears in the camera app to open the KOAMTAC pairing page in the browser.
3. Tap the Start button in the browser to search for nearby KDC devices.
4. Select the KDC1200 with the matching serial number and tap Pair.
5. Tap Pair on the pop-up to complete Bluetooth pairing.

\* The SmartSled will beep when pairing is successful and ready to use.



## Additional Resources

For product specifications, detailed documentation, setup guides, and support resources for the MUA and KDC1200 SmartSled, visit [koamtac.com](https://koamtac.com).

The KOAMTAC website is regularly updated with the latest product information, firmware updates, and compatible accessories.

For step-by-step video guides, product walkthroughs, and tutorials covering the full range of KOAMTAC devices, visit the official KOAMTAC channel on YouTube at [youtube.com/user/koamtac](https://youtube.com/user/koamtac).



100 Village Blvd Ste 300, Princeton, NJ 08540  
+1 609-256-4700 p  
[info@koamtac.com](mailto:info@koamtac.com) | [www.koamtac.com](https://www.koamtac.com)

## Bluetooth Profiles

HID

Allows one-way Bluetooth communication with an Android or iOS host device. The KDC1200 only transmits data to the host device.

SPP

Allows two-way Bluetooth communication. The KDC1200 transmits data to the host device and the host device can transmit data back to the KDC1200.

HID inputs data directly into an application. SPP requires the KOAMTAC KTSync® app or integration of the KOAMTAC SDK to input data into an application.



## KDC1200 + MUA

Mini Guide



For details on warranty, certifications, and legal compliance, please refer to [koamtac.com](https://koamtac.com) and the Reference Manual.

## Additional Bluetooth Pairing Barcodes



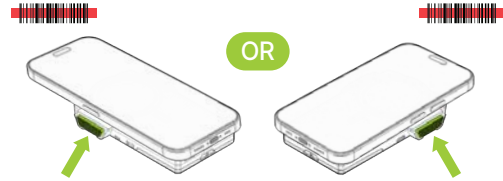
BLE SPP



BLE HID

## Basic Operation (Barcode)

1. While in Barcode Mode, aim the KDC1200 at the barcode and press either SCAN button located on the sides of the device. Barcodes can be scanned from any direction. Depending on the model, the aimer may appear as a cross, dot, or line.

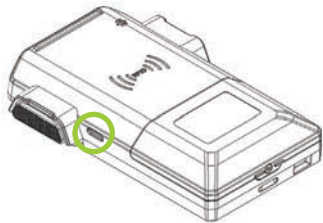


2. A successful scan will sound 1 beep. An unsuccessful scan will sound 5 beeps.

## External USB-C Port

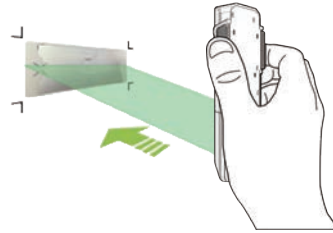
The KDC1200 SmartSled features an external USB-C port that can be used to charge the device with a power adapter or to connect it to a PC for data access.

The FMUA also includes integrated pogo pin contacts, allowing the KDC1200 to charge via KOAMTAC 1-, 2-, and 10-slot charging cradles. The smartphone must be charged separately.



## Basic Operation (RFID)

1. While in UHF Mode, keep the device straight and point the RFID antenna toward the RFID tag. Press either SCAN button to read the tag.



2. A successful scan will sound 1 beep.

For complete information on switching UHF read modes, refer to the KDC1200 Quick Guide.

## Using Keyboard Wedge

Keyboard wedge allows you to use your KDC1200 as a keyboard. The HID profile works as keyboard wedge by default. When using the SPP profile, KTSync provides a keyboard wedge function when KTSync keyboard is enabled. Please refer to the KDC Reference Manual for detailed instructions to enable KTSync keyboard.

1. Ensure that the KDC1200 is connected to the host device using the HID profile or the KDC1200 is connected via KTSync keyboard using the SPP profile.
2. Open any application on the host device that contains a text field you want to populate.
3. Tap the text field in the application.
4. Scan any barcode with the KDC1200.
5. The barcode data will then populate in the text field.

## Toggle Read Modes

The KDC1200 can read both barcodes and UHF RFID tags using the same SCAN buttons.

1. To toggle read modes, press the SCAN buttons in the following sequence within 3 seconds:  
< Left > < Left > < Right > < Right > < Left > < Right >



The KDC1200 will sound confirmation beeps when the read mode changes: 1 long + 2 short for UHF Mode, and 1 long + 1 short for Barcode Mode

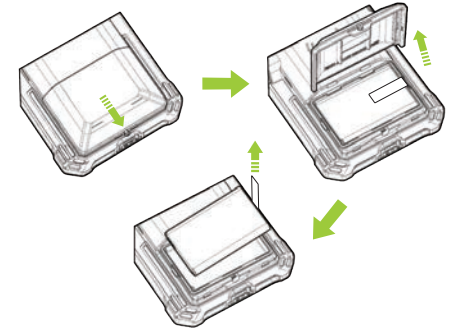
## KTSync & SDK

KTSync® is a program which communicates with the KDC1200 via Bluetooth. It enables users to read and store data. KTSync is compatible with iOS, Android, Windows, and Mac. It also supports wedging and downloading data from the KDC1200. For more information about KTSync, please visit: [www.koamtac.com/support/downloads/applications](http://www.koamtac.com/support/downloads/applications)

The Software Development Kit (SDK) is the perfect solution for creating a custom application to collect data utilizing your KDC1200. The KOAMTAC SDK covers all major development platforms: Android, iOS, Windows, Xamarin, Cordova, React Native and Flutter. Developers may take advantage of the complimentary SDK and enjoy the full benefits of the KOAMTAC Developer Program. For more information regarding the KOAMTAC Developer Program or to request the latest SDKs, visit: [www.koamtac.com/support/downloads/sdk](http://www.koamtac.com/support/downloads/sdk) or e-mail [sdk@koamtac.com](mailto:sdk@koamtac.com).

## Changing the Battery

1. Unscrew the screw on the bottom of the battery cover. Note that the screw won't be removed fully.
2. Open the battery cover by lifting the bottom of the battery cover. Then, hold the battery removal ribbon and remove the battery from the KDC1200.



## KOAMTACON

The first application suite of its kind, KOAMTACON is a data collection cloud suite designed specifically to be used with KDC Bluetooth barcode scanners, RFID readers, and Magnetic Stripe Readers (MSR) to collect data in any situation.

With apps ranging from ticketing to warehouse management, KOAMTAC has you covered. It's never been so easy to collect data via barcodes, RFID, or Magnetic Stripe.

KOAMTACON is:

- Simple to maintain
- Easy to use
- Cloud-based
- Compatible with any device

For more information please visit: [www.koamtac.com](http://www.koamtac.com)

