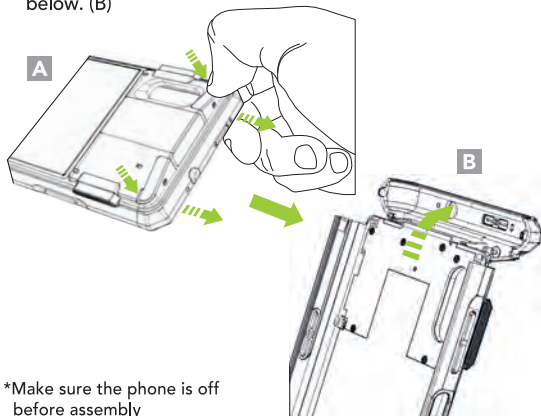


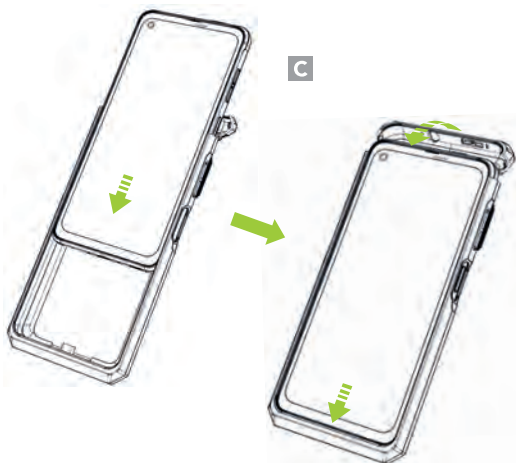
Assembly Instructions

1. Place your fingernails in the grooves on both sides of the SKX rear top cover and pull the top cover away from the SKX. (A) Then, flip the top cover back as shown below. (B)

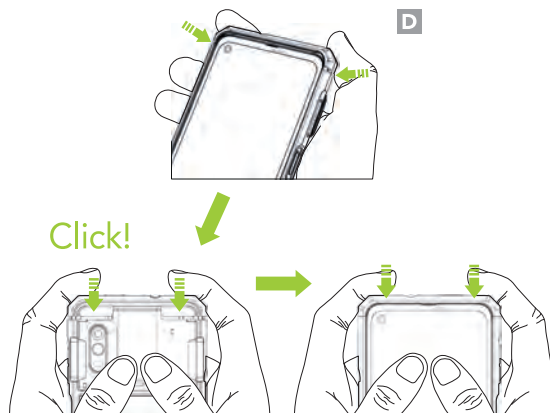


*Make sure the phone is off before assembly

2. Slide the XCover smartphone into the SKX and flip the top cover forward as shown. (C)



3. Align the top cover with the body of the SKX and close it by pressing both sides from the back until you hear a click. Press both sides of the top cover once again from the front. (D)



Additional Accessories

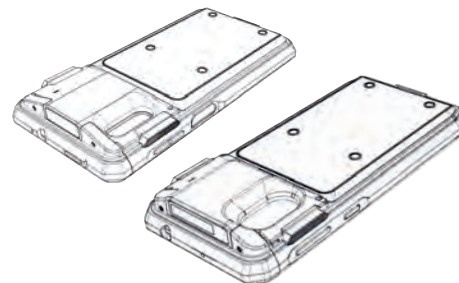
- ▶ 0.5W UHF Reader Companion
- ▶ 1.0W UHF Reader Companion
- ▶ 2000mAh Extended Battery Companion
- ▶ Pistol Grip Companion (battery optional)
- ▶ SKX Pistol Grip 1-Slot Charging Cradle
- ▶ SKX Pistol Grip 5-Slot Charging Cradle
- ▶ SKX 1-Slot Charging Cradle
- ▶ SKX 5-Slot Charging Cradle
- ▶ XCover 1-Slot Charging Cradle
- ▶ XCover 5-Slot Charging Cradle
- ▶ SKXSLED-mPOS
- ▶ SKXSLED-MSRIC

KOAMTAC

116 Village Blvd, Ste 305, Princeton, NJ 08540
+1 609-256-4700 p | +1 609-228-4373 f
info@koamtac.com | www.koamtac.com

KOAMTAC

SKX™ SmartSled®
Assembly Manual

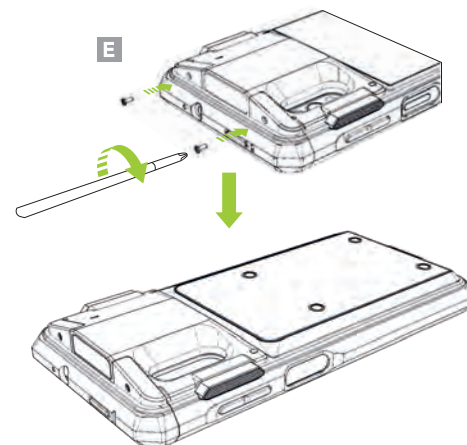


* PH0 screwdriver is necessary to complete assembly/disassembly.

* All pictures shown are for illustration purpose only.

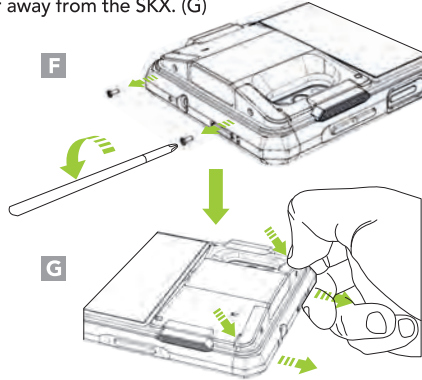
* Actual product may vary.

4. Using the provided screws, tighten the top cover via the screw holes on both sides of the scanner. (E)



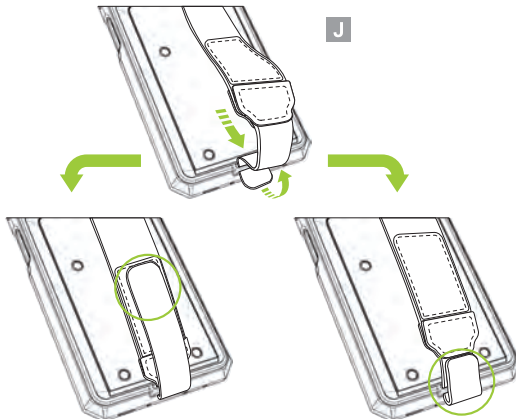
Removing the XCover

1. Remove the screws on both sides of the scanner. (F) Next, remove the top cover by pressing the grooves on both sides of the SKX with your fingernail and pull the top cover away from the SKX. (G)

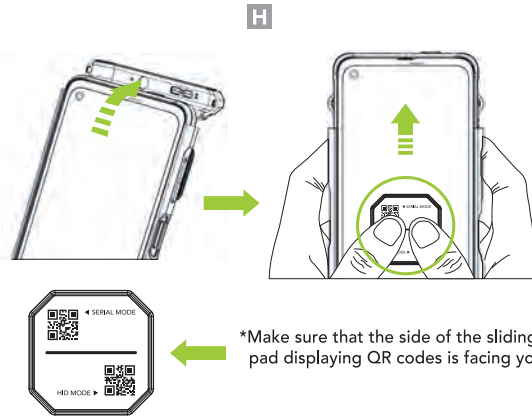


*Make sure that the phone is off before assembly

2. Loop the hand strap band through the slot on the bottom of the SKX and attach the hook and loop band to itself. (J)

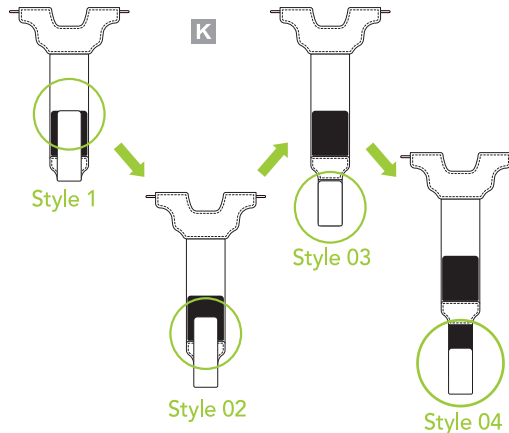


2. Flip the top cover back. After placing the sliding pad on the XCover screen as shown in the figure, remove the XCover by pushing up on the sliding pad with both thumbs. (H)



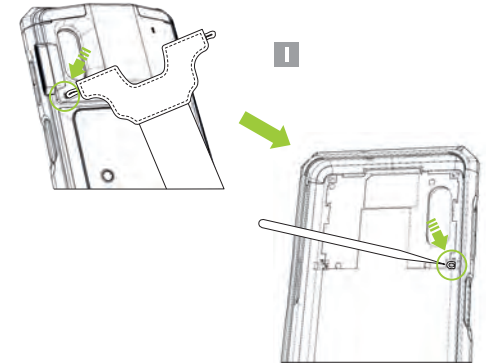
*Make sure that the side of the sliding pad displaying QR codes is facing you.

3. By adjusting the lower hook & loop section of the hand strap, its length can be adjusted 4 ways to suit the user. (K)



Hand Strap Assembly Instructions

1. Slide the hand strap's left elastic band through the left strap hole of the SKX. Use pin or sharp tool to fasten the left elastic band to the plastic tab inside the SKX. (I) Repeat the process with the hand strap's right elastic band.



Protective Boot Assembly Instructions

Push the lower part of the SKX into the lower part of the Protective Boot as shown below. Then insert the upper part of the SKX into the upper part of the Protective Boot. (L)

