

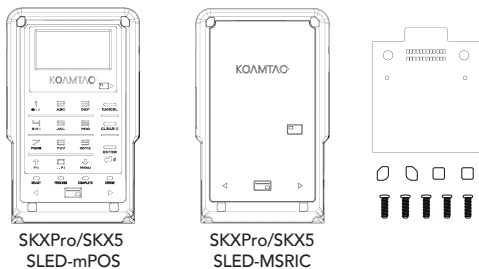
What's in the Box?

One (1) of the following devices:

- SKXPro/SKX5 SLED-mPOS Companion
- SKXPro/SKX5 SLED-MSRIC Companion

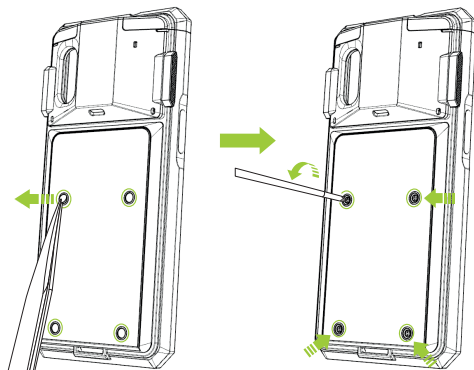
And:

- 1 contact PCB
- 4 screw caps
- 4 screws + 1 extra

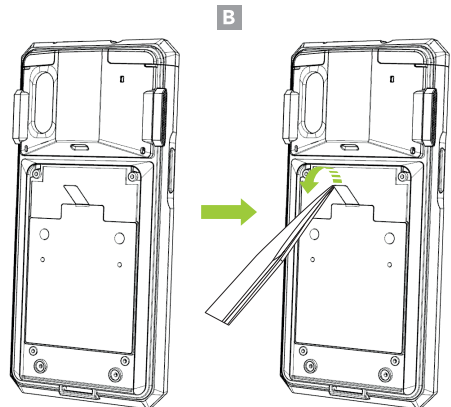


*SKXPro/SKX5 sold separately. Tweezers and PH0 screw driver (not included) will be necessary to complete assembly.

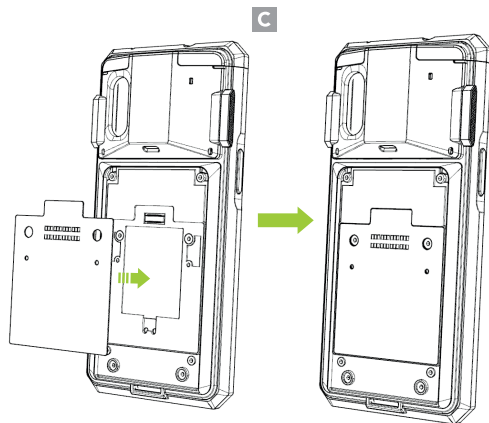
1. Using tweezers, carefully remove all four (4) screw caps from the back of the SKXPro/SKX5. Then, remove all (4) screws from the back of the SKXPro/SKX5. (A)



2. Separate the companion cover from the SKXPro/SKX5 by removing the terminal protective tape with tweezers. (B)



3. Attach the contact PCB to the SKXPro/SKX5. (C)



Additional Accessories

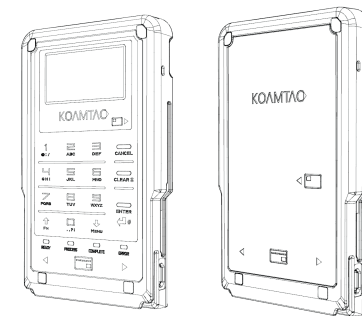
- ▶ 0.5W UHF Reader Companion
- ▶ 1.0W UHF Reader Companion
- ▶ 2000mAh Extended Battery Companion
- ▶ Pistol Grip Companion (battery optional)
- ▶ SKXPro/SKX5 1-Slot Charging Cradle
- ▶ SKXPro/SKX5 5-Slot Charging Cradle
- ▶ XCover Pro/XCover 5 1-Slot Charging Cradle
- ▶ XCover Pro/XCover 5 5-Slot Charging Cradle

KOAMTAC

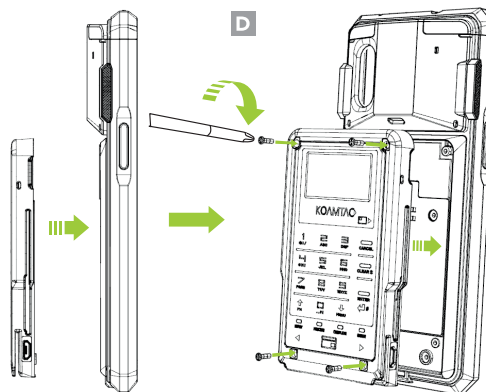
116 Village Blvd, Ste 305, Princeton, NJ 08540
+1 609-256-4700 p | +1 609-228-4373 f
info@koamtac.com | www.koamtac.com

KOAMTAC

SKXPro/SKX5
SLED-mPOS/SLED-MSRIC
Assembly Manual



4. Align the screw holes of the SLED-mPOS or SLED-MSRIC Companion with the screw holes of the SKXPro/SKX5. Use the four (4) included screws to attach the SLED-mPOS or SLED-MSRIC Companion to the SKXPro/SKX5. (D)



5. Attach the four (4) included screw caps to the SKXPro/SKX5 SLED-mPOS or SLED-MSRIC Companion. (E)

