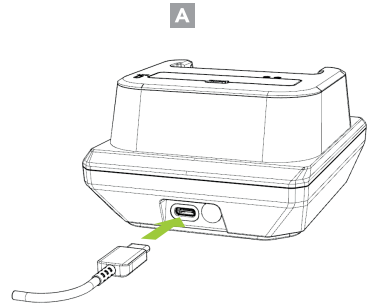


Charging via USB Type-C

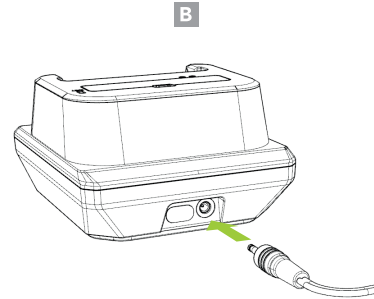
Use a genuine Samsung AFC adaptor for 9V fast charging. If not using a Samsung AFC adaptor, use a USB adaptor with at least a 5V/2A rating to provide 5V normal charging. (A)



*Fast charging is only supported when using a genuine Samsung AFC charger.

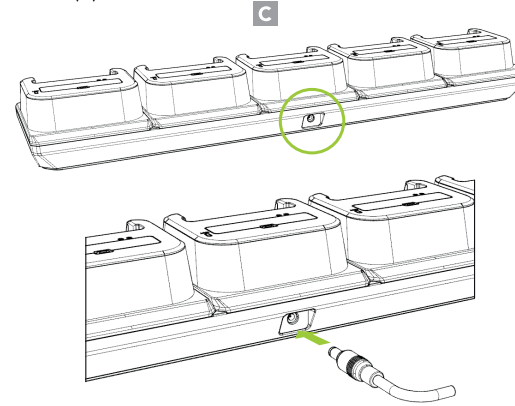
Charging via DC Connector

The 12V/2A DC power adaptor supports 9V fast charging when the XCover 5 is mounted on the charging cradle. (B)



5-Slot Charging via DC Connector

The 12V/10A DC power adaptor supports 9V fast charging when the XCover 5 is mounted on the 5-slot charging cradle. (C)



Additional Accessories

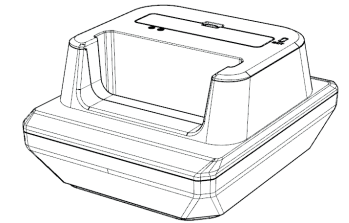
- ▶ 0.5W UHF Reader Companion
- ▶ 1.0W UHF Reader Companion
- ▶ 2000mAh Extended Battery Companion
- ▶ Pistol Grip Companion (battery optional)
- ▶ SKX5 Companion
- ▶ SKX5 1-Slot Charging Cradle
- ▶ SKX5 5-Slot Charging Cradle
- ▶ XCover 5 Genuine Battery

KOAMTAC

116 Village Blvd, Ste 305, Princeton, NJ 08540
+1 609-256-4700 [p](#) | +1 609-228-4373 [f](#)
info@koamtac.com | www.koamtac.com

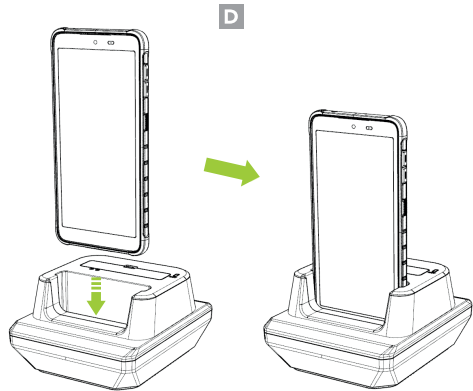
KOAMTAC

XCover 5
Charging Cradle Mini Guide



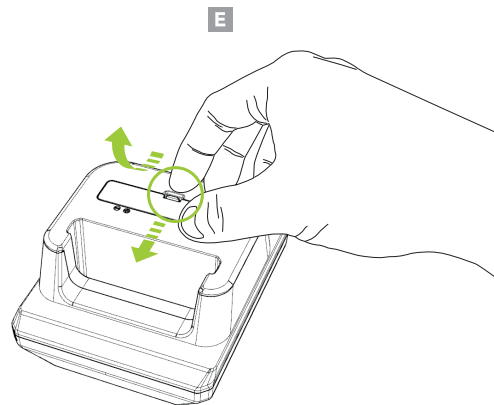
Charging the XCover 5

Insert the XCover 5 into the device charging slot. (D)



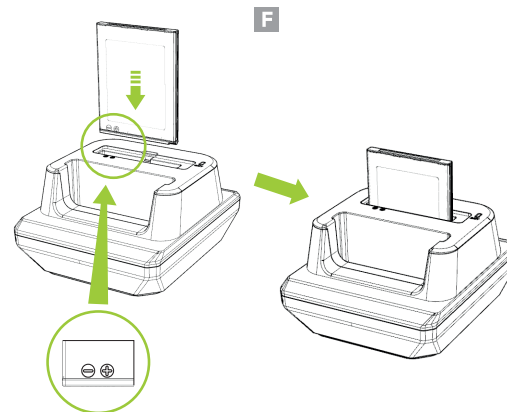
Removing the Battery Cover

To remove, pull the hook on the battery cover forward and tilt it upwards. (E)

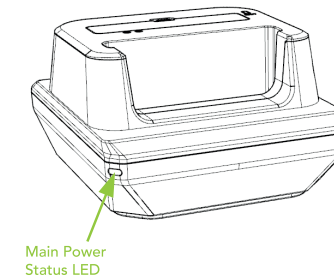


Charging the XCover 5 Battery

Insert the battery into the battery charging slot. Refer to the battery polarity indicators for correct placement. (F)

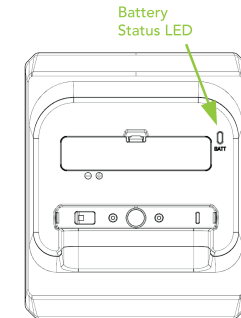


Cradle Power LED Status



Green : Always on when the cradle is powered on

Battery LED Status



Green : Fully charged
Orange: Charging

Blinking Red: Charging Issue
- Overheating
- Charging fault
- Foreign material inside