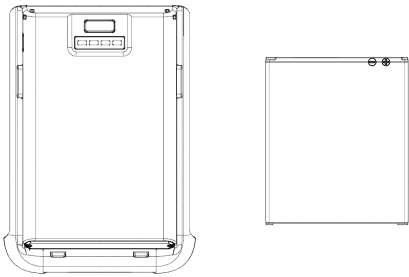


What's in the Box?

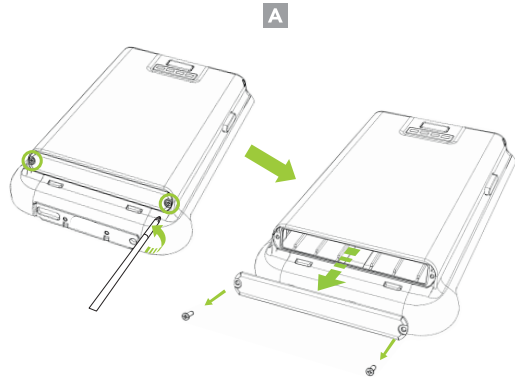
- ▶ 1 x XCover6 Pro Smartcase Extended Battery Pack
- ▶ 1 x 3950mAh (Rated) / 4050mAh (Typical) Li-ion XCover6 Pro Battery



* XCover6 Pro Battery is installed into the Smartcase Extended Battery Pack.
* Tweezers and PH0 screw driver (not included) will be necessary to complete assembly.

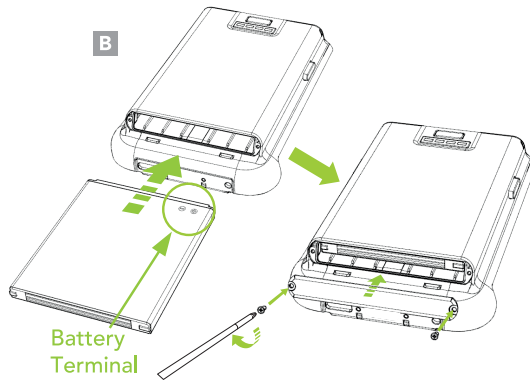
Inserting the XCover6 Pro Battery

1. Remove both screws from the battery door of the Smartcase Extended Battery Pack. Then, remove the battery door. (A)



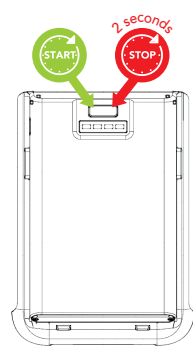
2. Check the position of the battery terminal and insert the battery. Replace the battery door and tighten both screws to secure the battery door. (B)

All LED indicators will blink green 3 times when the battery is correctly installed.



Starting/Stopping Phone Charging

Charging provided from the Smartcase Extended Battery Pack can be toggled on or off. When on, the Extended Battery Pack will provide power to the phone. When off, it will stop providing power to the phone.



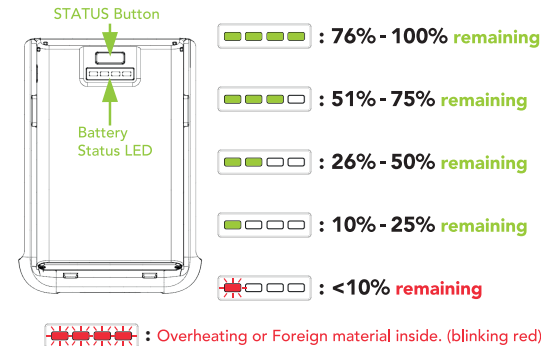
To start charging (ON)
Press the STATUS button once. After displaying the battery capacity, the Extended Battery Pack will begin charging the phone.

To stop charging (OFF)
Press and hold the STATUS button for 2 seconds.

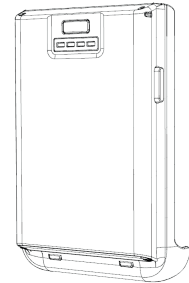
Automatically charges upon detecting external power. To stop charging, disconnect from power and press status button for 2 seconds.

LED Indicator Status (Charging Phone)

Pressing the STATUS button will display the remaining battery capacity when the phone is charged (blinking green).



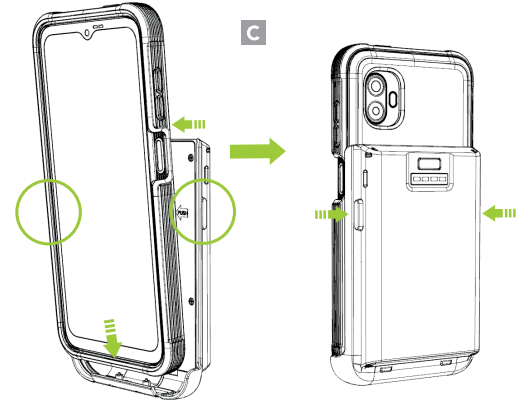
XCover6 Pro Smartcase
Extended Battery Pack Mini Guide



* All pictures shown are for illustration purposes only. Actual product may vary.

Assembly Instructions

Tilt the Smartcase forward and slide it into the bottom of the Smartcase Extended Battery Pack. Secure the Smartcase to the Extended Battery Pack by pressing the holder buttons on each side of the Extended Battery Pack. (C)



LED Indicator Status (Charging Battery Pack)

Displays the remaining battery capacity when the Extended Battery Pack is charged via the cradle or USB* (solid orange). When fully charged, the LED indicators will be green.

* When charging via USB, the cable current rating should be over 2A.

